

Posted on November 30, 2019

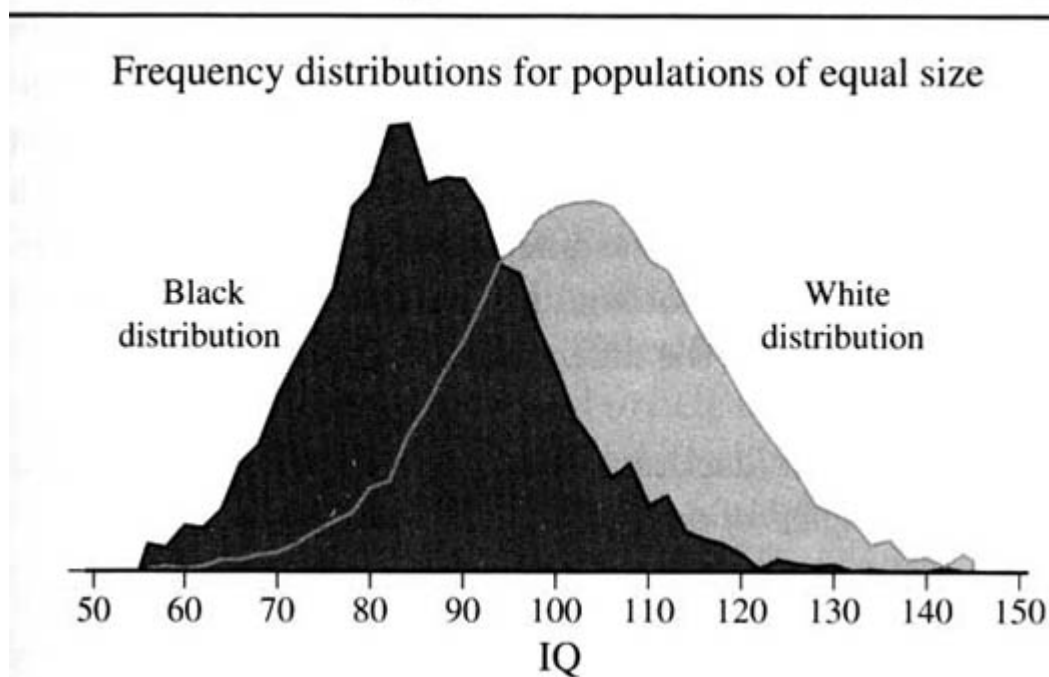
## Race Differences in Intelligence in 20 Charts

*Chris Roberts, American Renaissance, November 30, 2019*

Whether you look at IQ tests nationally or internationally, or scores on the PISA test, SAT, ACT, or bar exams, there are always racial differences.

**IQ:**

### The black and white IQ distributions in the NLSY, Version I



From [\*The Bell Curve\*](#) by Charles Murray and Richard Herrnstein

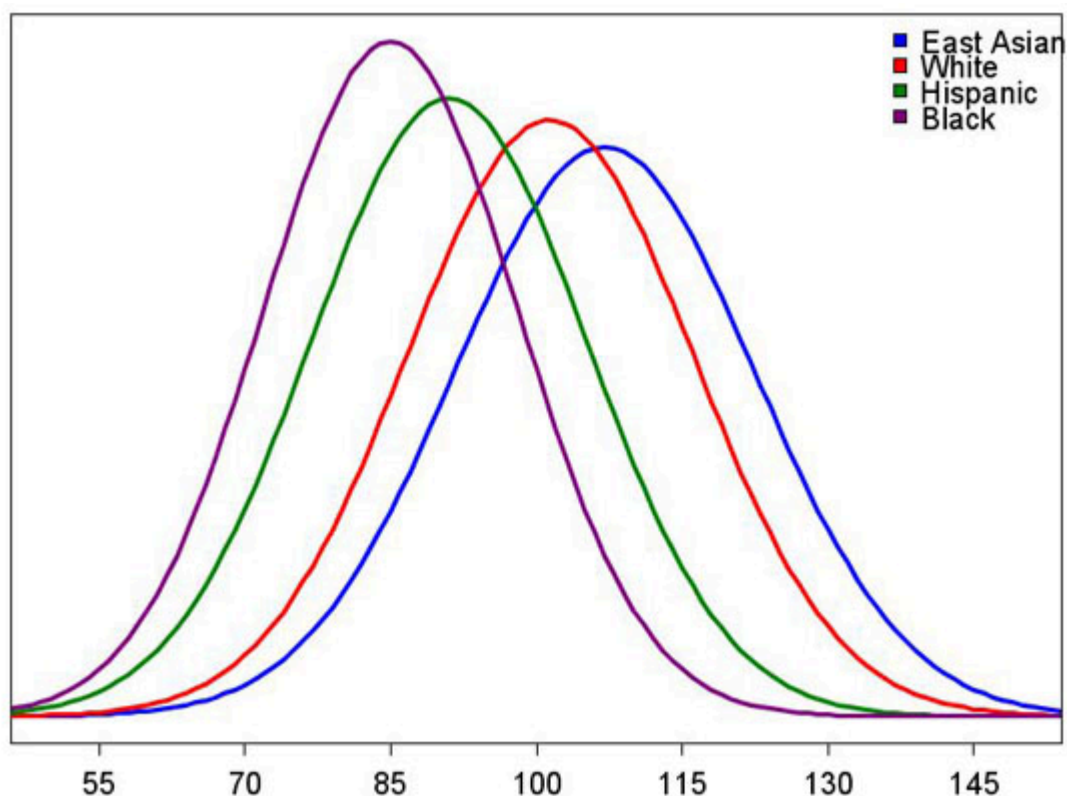
Population	IQ	Population	IQ
North-East Asians	105	Pacific Islanders	85
Europeans: North, central	100	South Asians	84
Europeans: South	92-96	North Africans	83
Arctic	91	Sub-Saharan Africans	71
Maoris	90	Australian Aborigines	62
Hispanics (US)	89	Pygmies	57
Native Americans	86	Bushmen	55

From [Race Differences in Intelligence: An Evolutionary Analysis](#) by Richard Lynn

*Table 12.1. Regional averages of national IQ, QHC, and its five components in the group of 192 countries*

Region	N	IQ	QHC	PPP GNI	Literates 2002	Tertiary enroll.	LE 2002	ID 2002
Europe and European offshoots	46	96.7	69.4	18,507	98.2	48.0	75.7	29.0
Latin America and the Caribbean	35	81.6	50.3	7,591	88.8	22.5	71.0	18.2
Middle East and North Africa	26	84.8	43.3	7,558	80.4	23.5	69.9	6.0
East Asia	8	105.5	52.2	15,774	95.8	43.0	73.4	13.9
Other Asia and Pacific	30	85.4	38.8	4,550	76.8	10.7	64.9	12.0
Sub-Saharan Africa	47	69.4	24.5	2,644	60.1	3.7	47.8	7.7

From [IQ and Global Inequality](#) by Richard Lynn and Tatu Vanhanen



ACT:

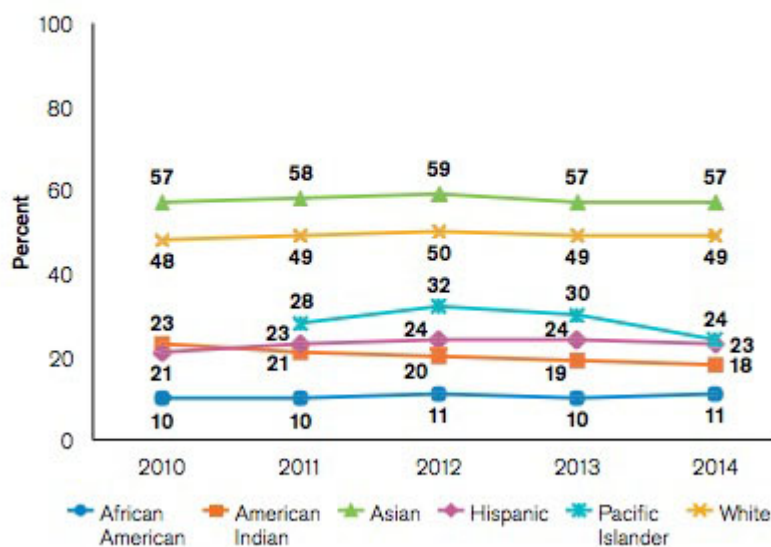
## Readiness for college

Percentages of Latino, white and all students in California who met the college readiness targets on the ACT. Of the 121,815 students who took the ACT in California, about 38% were Latino and nearly 28% were white.

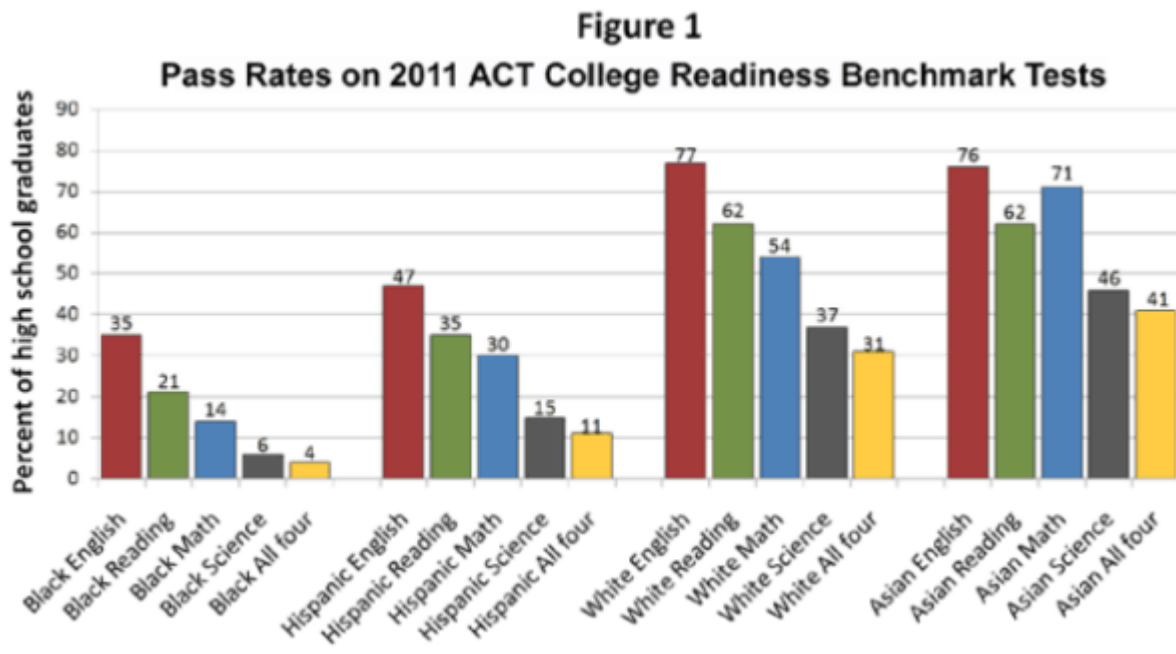
	Reading	Science	English	Math
Latino	34%	25%	53%	35%
White	73%	64%	90%	73%
Total	54%	46%	72%	56%

[Source](#)

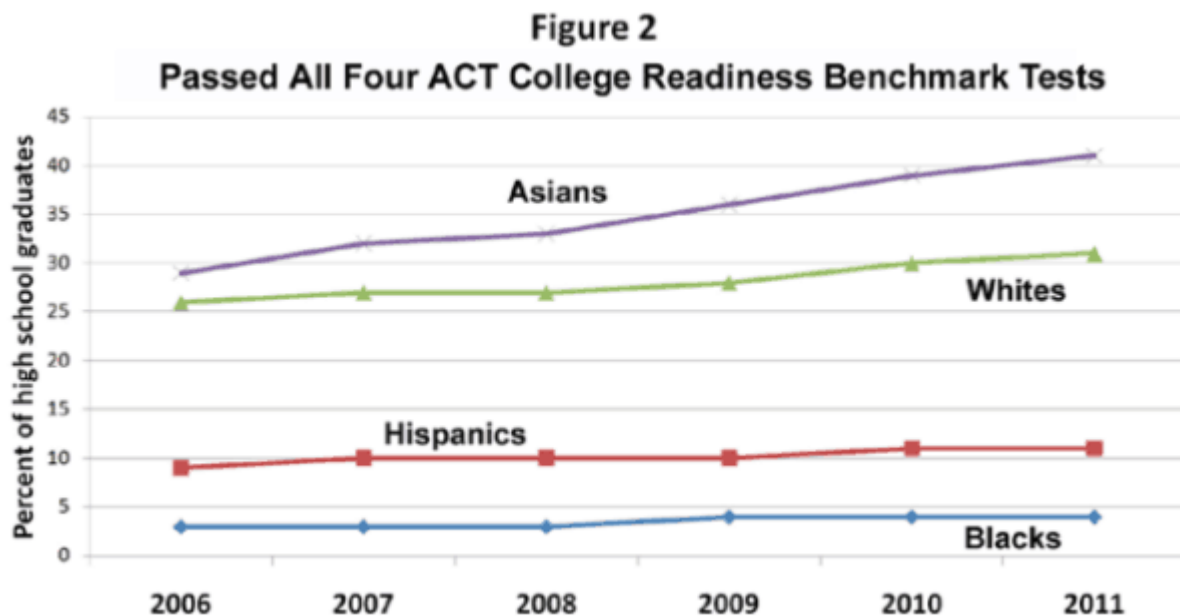
Percent of 2010–2014 ACT-Tested High School Graduates Meeting Three or More Benchmarks by Race/Ethnicity\*



[Source](#)

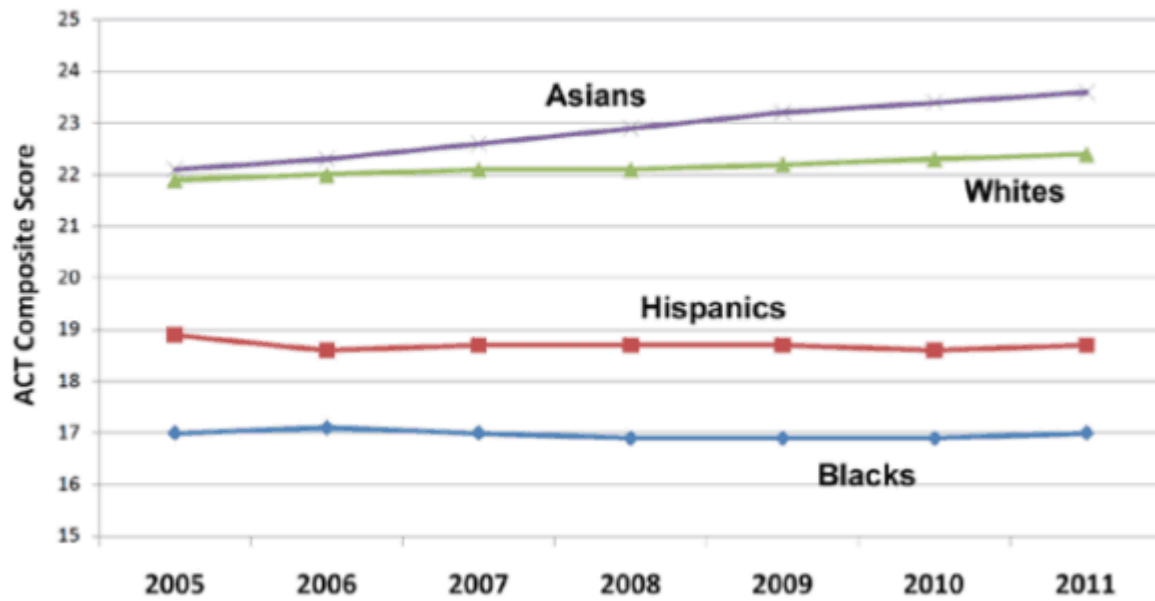


[Source](#)



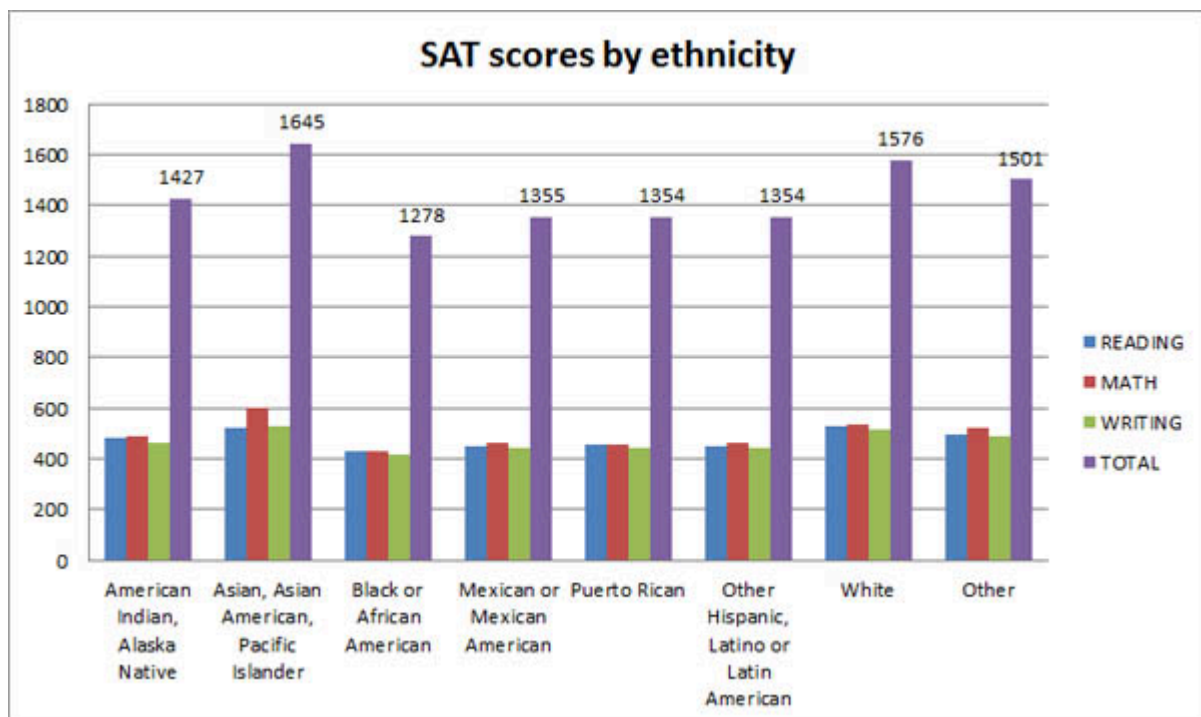
[Source](#)

**Figure 3**  
**ACT Composite Scores**



Source

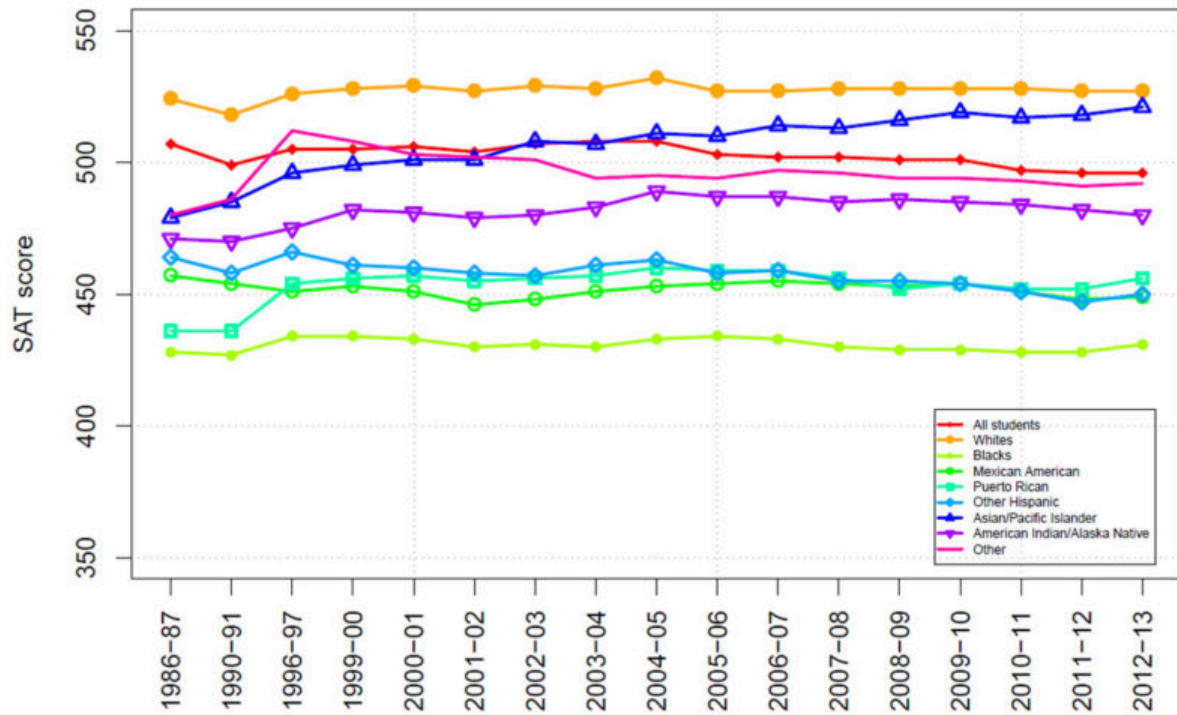
**SAT:**



Source

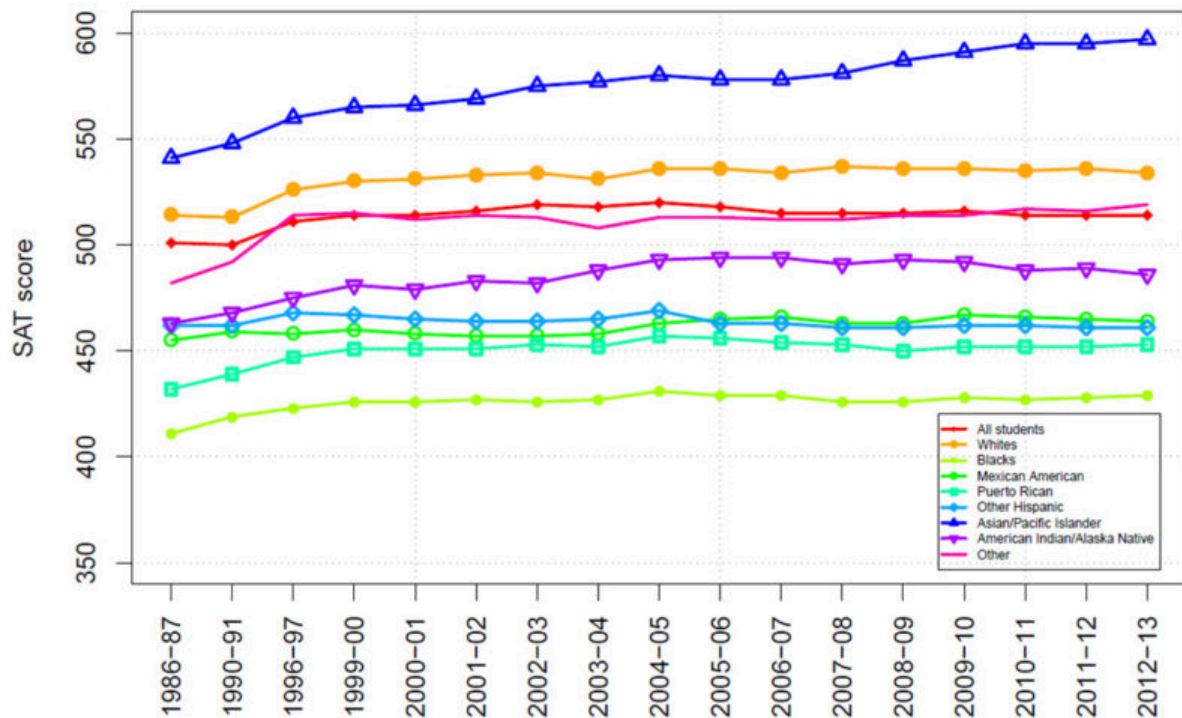


**Average SAT Reading Scores in the period of 1986–2013**



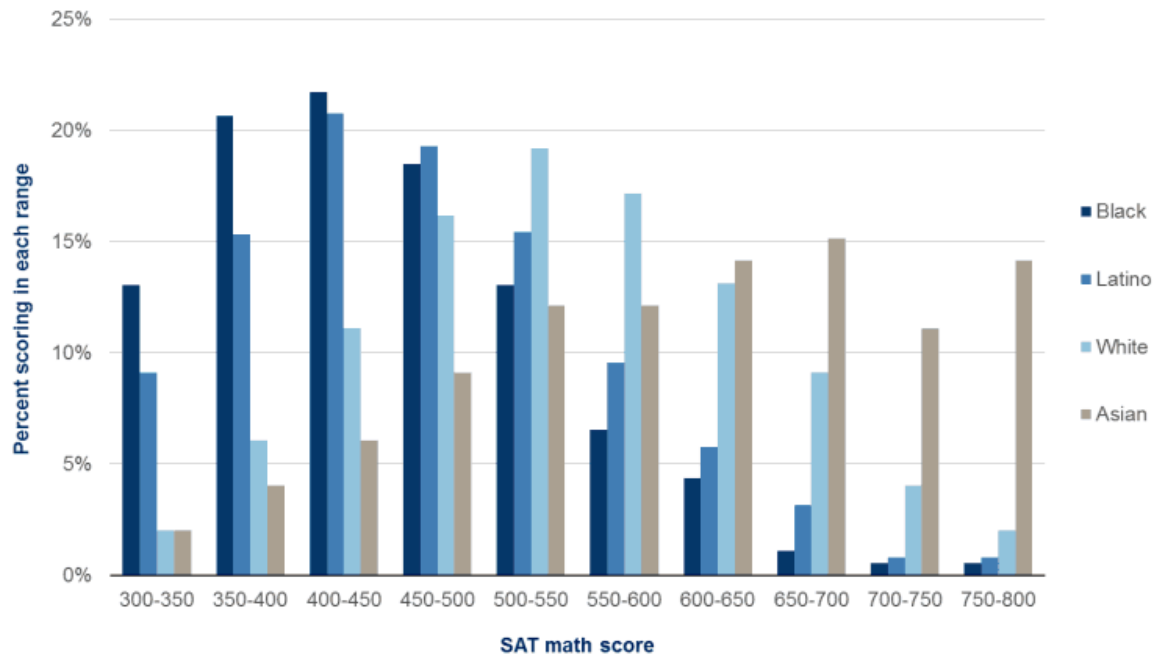
Source

**Average SAT Math Scores in the period of 1986–2013**



Source

## Race gaps in math SAT scores

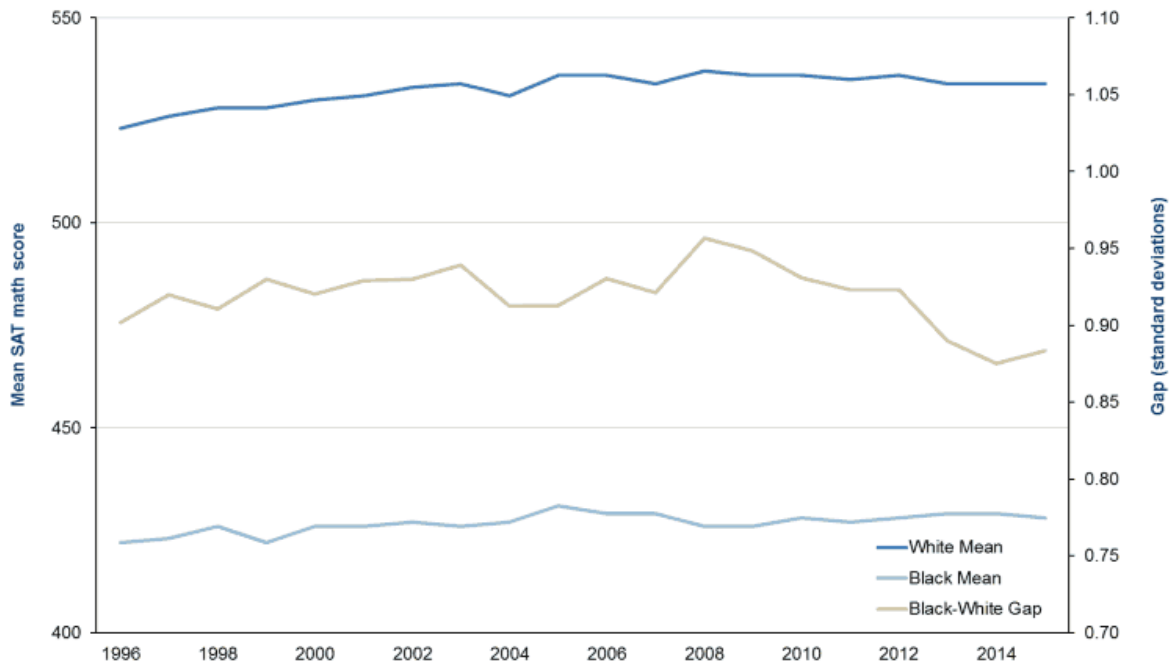


Source: College Board, SAT percentile ranks for 2015 college-bound seniors.

BROOKINGS

### Source

## Black-white SAT math achievement gap over time

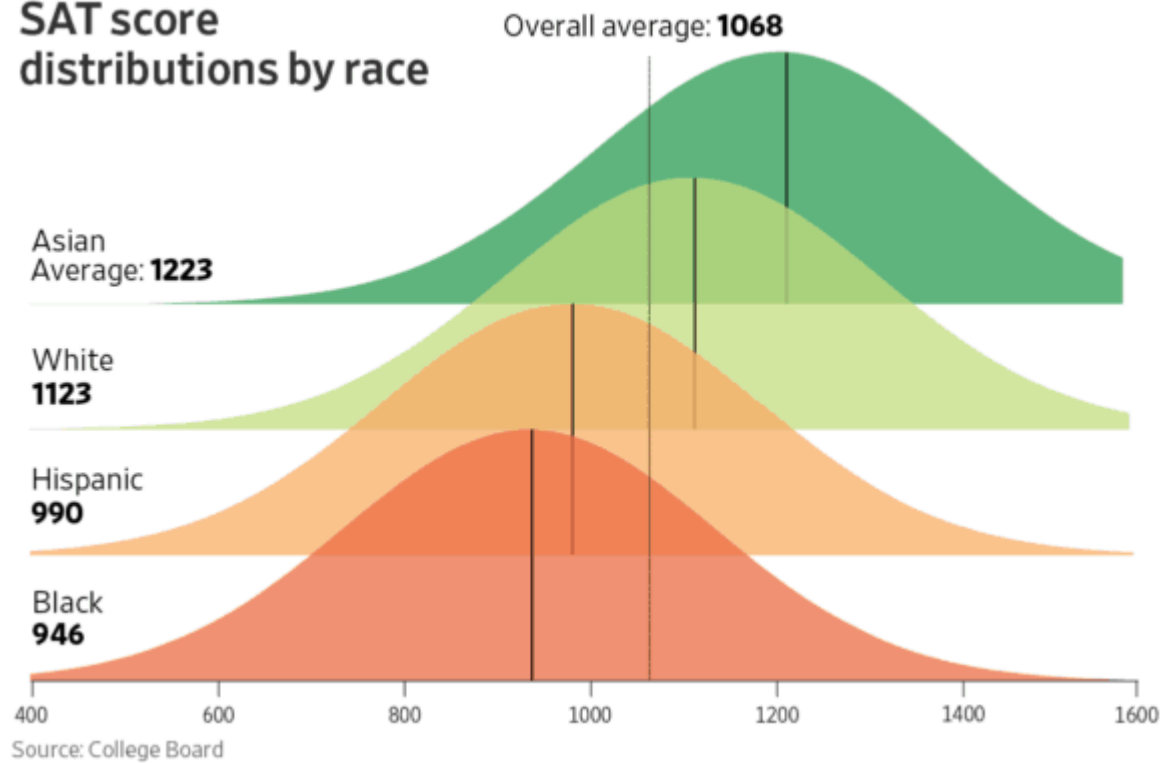


Source: Compiled from Annual Total Group Profile Reports produced by the College Board.

BROOKINGS

### Source

## SAT score distributions by race



[Source](#)

## PISA:

	Science	Reading	Math
<b>U.S. average</b>	<b>496</b>	<b>497</b>	<b>470</b>
White	531	526	499
Black	433	443	419
Hispanic	470	478	446
Asian	525	527	498
Multiracial	503	498	475
<b>OECD average</b>	<b>493</b>	<b>493</b>	<b>490</b>

From the 2015 Program for International Student Assessment, or "PISA." [Source](#)

## Law school:



**TABLE 3.2: BLACK-WHITE ACADEMIC INDEX GAP IN SIX GROUPS OF  
AMERICAN LAW SCHOOLS, 1991 MATRICULANTS**

Law School Group	Median Academic Index		Black-White Gap	Standard Deviation in Index for Whites
	Blacks	Whites		
Group 1: Very Elite Schools (n = 14)	705	875	170	74
Group 2: Other "National" Schools (n = 16)	631	805	174	89
Group 3: Midrange Public Schools (n = 50)	586	788	202	75
Group 4: Midrange Private Schools (n = 50)	560	725	165	75
Group 5: Low-Range Private Law Schools (n = 18)	493	665	172	73
Group 6: Historically "Minority" Schools (n = 7)	516	641	125	103

Source: LSAC-BPS Data, *supra* note 133.

Source

**TABLE 2.2: COMPARATIVE ADMISSION COHORTS AT THE UNIVERSITY  
OF MICHIGAN LAW SCHOOL, 1999**

Admissions Rate for White Applicants		Admissions Rate for Black Applicants	
Index	Proportion of Cohort Admitted	Index	Proportion of Cohort Admitted
850 and Above	97%	710 and Above	96%
830-849	91%	690-709	90%
810-829	70%	670-689	72%
790-809	44%	650-669	38%
750-789	16%	610-649	22%
710-749	5%	570-609	11%
Under 710	2%	Under 570	0%

Source: Data disclosed by the University of Michigan Law School in the course of the *Grutter* litigation; available at <http://www1.law.ucla.edu/~sander/Data%20and%20Procedures/SuppAnalysis.htm>. Cells of data based on undergraduate GPA and LSAT scores have been converted to a 0-1000 index using this formula:  $(LSAT - 120) * 10 + (UGPA * 100)$ .

Source

TABLE 6.2: BAR PASSAGE RATES IN THE UNITED STATES FOR WHITES AND BLACKS, 1991-1996

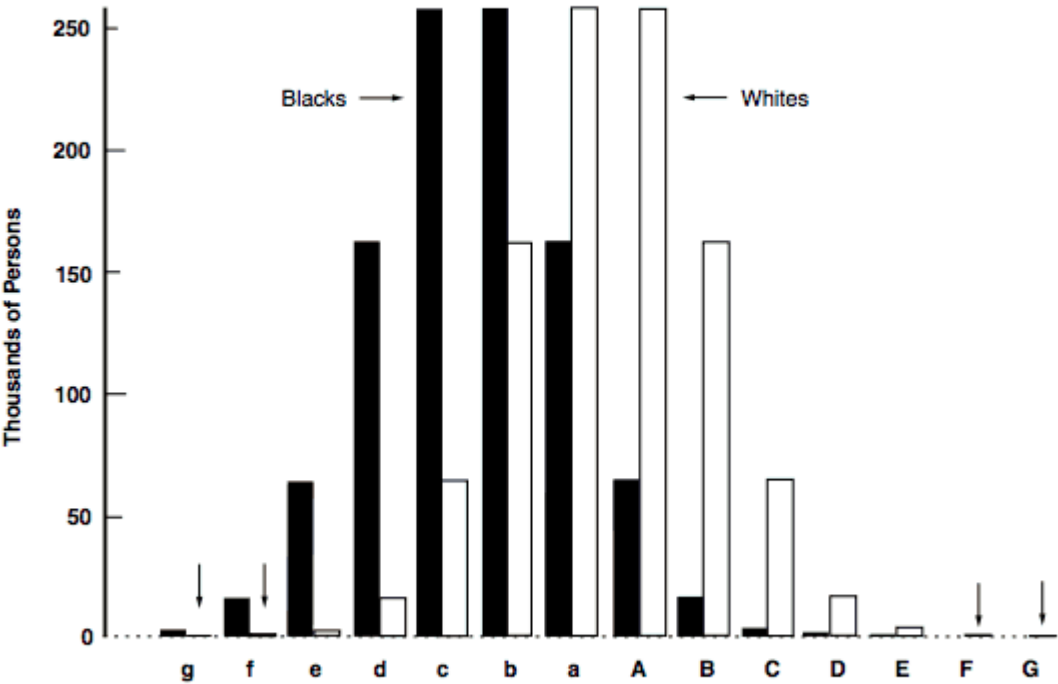
Index Range	Proportion of Bar-Takers Failing on the First Attempt (for the Entire United States)	
	Whites	Blacks
400-460	52%	71%
460-520	34%	55%
520-580	26%	47%
580-640	19%	34%
640-700	13%	26%
700-760	9%	12%
760-820	5%	12%
Bar-Takers in Sample	19,112	1346

Source: LSAC-BPS Data, *supra* note 133.

Source

Other:

Galton’s depiction of the distribution of intelligence among one million Englishmen and one million black Africans.



The letters below the baseline are Galton’s grades of intelligence from g (imbeciles) to G (higher “eminent”), on the scale applicable to Englishmen. (The vertical arrows indicate columns that should be white but are too short.) The graph is based on Galton’s data in *Hereditary Genius*.

Source